



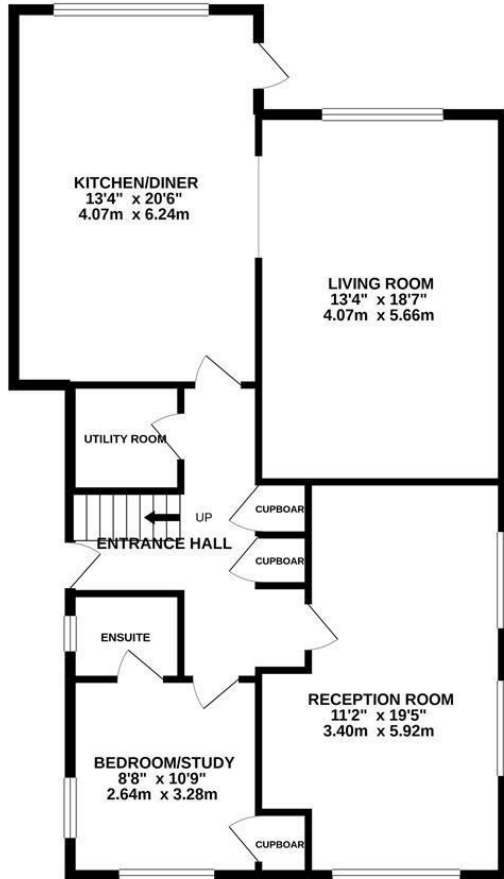
Pilot Road, Hastings TN34 2AU

Offers in excess of £490,000

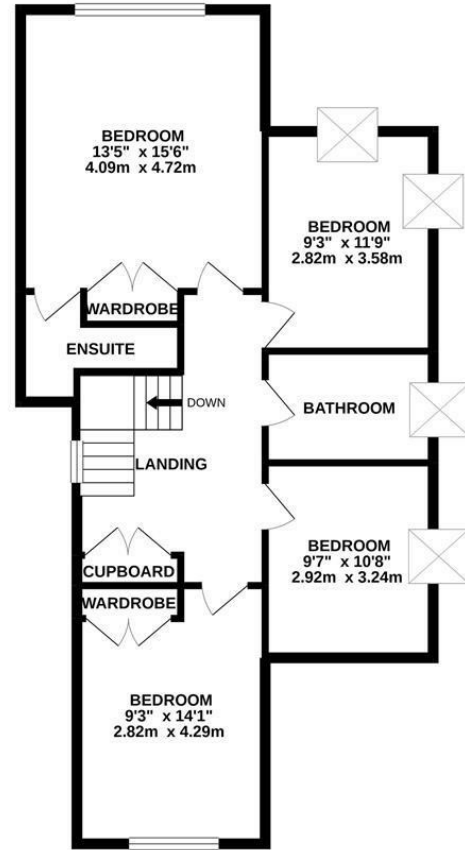


Five bedroom detached FAMILY HOME set elevated above the town with STUNNING SEA VIEWS. Its positioned in a sought after location close to St. Helens Woods, Alexandra Park, local amenities and transport links. The accommodation here enjoys a VERSATILE LAYOUT spanning two storeys, it's arranged as a bright EAT-IN KITCHEN which measures 13'4 x 20'6 offering large windows which frame a Southerly aspect and plenty of space for a dining table. There is a HANDY UTILITY ROOM and cloakroom a separate, DUAL ASPECT LIVING ROOM and a further reception room at the rear of the property. On the ground floor there is also a double bedroom with an EN-SUITE BATHROOM. There are FOUR DOUBLD BEDROOMS on the first floor along with a stylish family bathroom with a SUNKEN BATH and separate shower enclosure, the main bedroom also features an en-suite shower room. There is an area of lawned garden at the rear and an enclosed decked garden at the front which enjoys the later afternoon and evening sun. Enjoying OFF ROAD PARKING for multiple vehicles, generous proportions and being sold with NO ONWARD CHAIN this fantastic property would make the perfect family home.

GROUND FLOOR
1102 sq.ft. (102.4 sq.m.) approx.



1ST FLOOR
797 sq.ft. (74.0 sq.m.) approx.



TOTAL FLOOR AREA: 1899 sq.ft. (176.4 sq.m.) approx.

Whilst every attempt has been made to ensure the accuracy of the floorplan contained here, measurements of doors, windows, rooms and any other items are approximate and no responsibility is taken for any error, omission or mis-statement. This plan is for illustrative purposes only and should be used as such by any prospective purchaser. The services, systems and appliances shown have not been tested and no guarantee as to their operability or efficiency can be given.

Made with Metreplex ©2021

